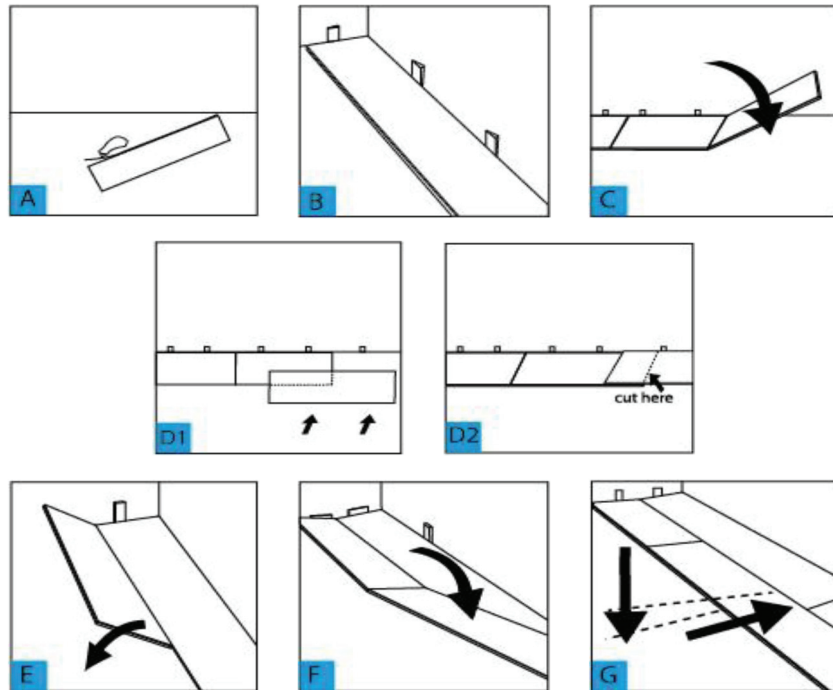


Installation Instructions Care & Maintenance

1. Read enclosed detailed installation instructions before beginning install.
2. A flat subfloor is a must!
3. Proper moisture testing is a must!
4. Proper expansion around all permanent structures is a must!
5. Molding, trim, transition, and finish pieces must not prevent the floor from floating.
6. Failure to follow installation instructions will void warranty.
7. Acclimation is normally not necessary but may be required in extreme circumstances.

Please Carefully Read All Instructions Before You Begin Your Installation.
Improper Installation Will Void The Warranty.



Always check flooring planks for defects such as chips and color variations under good light conditions. Check that grooves are free of debris. **Use planks from multiple boxes** during installation to ensure random pattern variation.



The flooring should be stored and installed in a climate controlled area with an average temperature of 55-95° F (13-35°C). If flooring is exposed to temperatures less than 40° F (5° C) or more than 95° F (35° C) for more than one hour, the flooring must be acclimated for a minimum of 12 hours by spreading out the cartons during acclimation but not stacking the cartons. If stacking is necessary, stack the cartons in a crisscross manner - **never stacking** the cartons more than three high.

The area in which the flooring is installed must remain *climate controlled with the temperature between 65°85°F (18-25°C) for the life of the product.

**SPC flooring may be installed in a vacation home, three-seasons rooms, etc., with a temperature between 55-95°F*

(13-35°C) at least 48-hours before and during the installation, even if temporary temperature measures must be taken. Thereafter, the temperature cannot fall to below 40°(5°F) or higher than 95 (35°C), and RH must maintain between 35 – 70%. In these installations, you must use transition moldings at doorways and in any span greater than 40' in any direction, as is true in light commercial and radiant heat installations.

This product is a floating floor and should NOT be *secured to the floor. Do not install fixed objects, such as cabinets, on top of the flooring unless it is fully adhered and do not fasten trim/molding/ transition pieces directly to the floor.

**You may adhere SPC flooring in light commercial and commercial installations using adhesive, following directions on the pail.*

Required Tools and Supplies:

- Circular Saw
- Safety Glasses
- 1/4" or 1/2" spacers
- Utility Knife
- Straight Edge Ruler or T-Square
- Pencil
- Tape Measure

If existing baseboard molding is difficult to remove, Quarter Round molding likely will be required to cover the expansion space need between flooring and baseboard.

SUITABLE TYPES OF SUB FLOORS AND FLOOR PREPARATION

The subfloor must be **flat, dry, and clean**. Carpet staples or any/all adhesive residue must be removed and floor must be clean to ensure proper installation. All wooden subfloors must be structurally sound and must be installed following the American Plywood Association's (APA) and the manufacturer's recommendations. *If it is uncertain that any old adhesive residue may cause issues, use Adhesive Encapsulator.*





To check for flatness, hammer a nail into the center of the floor. Tie a string to the nail and push the knot against the floor. Pull the string tight to the farthest corner of the room and examine the floor for any high/lows relative to the string. Subfloors must be flat to 1/8" per 6' (3mm per 0.92 meter). Any areas in excess of the flatness specification must be sanded down or filled with an appropriate leveler.

This product can be installed over most existing floors including wood, non-cushioned vinyl or linoleum, and ceramic/porcelain tile if the existing flooring is intact and properly secured to the subfloor. If installing over ceramic/porcelain tile, grout lines in excess of 1/16" (0.625) must be filled with a Portland based skim coat/floor leveler according to the manufacturer's guidelines.

Warning: This product should not be installed over carpet. Installation over carpet will void the warranty. When installed in rooms with direct sunlight, during the peak hours of sunlight, the use of blinds/shades or drapes to avoid prolonged direct sunlight periods is recommended.

This product is waterproof but is not a moisture barrier. The product can withstand topical water and water penetration for up to 16 hours without being damaged. However, water leaking over or around the outer edges of the flooring can damage a wood subfloor and breed mold/mildew growth on subfloor and walls. This is not considered a defect in the flooring.

Moisture in concrete subfloors can create high moisture vapor emission levels, hydrostatic pressure, and high alkalinity levels. This combination is highly corrosive and damaging to flooring, over time. To avoid this, ensure that concrete subfloors are constructed according to the American Concrete Institution's guidelines (ACI's 302.2 Guide). To check current conditions, a RH test using in situ Probes (ASTM F2170) is necessary. If the level of hydrostatic pressure is over 90% RH, use a moisture barrier or you must use Adhesive (up to 95 % RH) for the install. There also is calcium chloride testing (ASTM F1869) but the in situ

Probe (ASTM F2170) is the preferred test. Lightweight concrete (minimum density of 90 lbs. per cubic foot) is acceptable if installed according to the manufacturer's instructions and primed with primer.

Note: New concrete needs to cure for at least 60 days before installing flooring materials.

If considering **Radiant heat**, only Hydronic radiant heat is allowed. The heating components must have a minimum of 3/8" separation from the product. System must be operational for a minimum of two weeks prior to installation. Five days prior to installation, the temperature should be reduced to 65°F (18°C). After installation, the temperature can be raised gradually (5°F per hour) to a maximum operation temperature of 85°F (29°C). An in-floor thermostat is recommended to avoid overheating and a transition strip must be used for any installation longer than 40' in any direction. It is also suggested to use T-Molding in doorways.





Installation

- Remove the tongue (on the long side) from the first row of planks. This will ensure that the decorative surface of the flooring is under the finished trim when installed. Use a utility knife to score through the tongue several times until it easily snaps off (Figure A). **Note: The first row of planks may need to be trimmed lengthwise for a better fit at the end of the installation. Measure the room and divide by the width of the plank. If there is a remainder of less than 2", the first row will need to be trimmed by that amount.**
- Starting in the left hand corner, place the first plank with its' trimmed side towards the wall. Use spacers along all walls to maintain a minimum expansion gap of 1/4" (7-8mm) between the walls and the flooring (Figure B).
- Attach the ends of the 1st plank and the second plank by lifting the 2nd plank and inserting the tongue on the short side into the groove of the first plank and lowering it into place. Line up edges and corners carefully (Figure C).
- Continue along the wall until you reach the last full plank, connecting each plank in manner described above. To fit the last plank, turn plank over (face down). Place the plank in the corner so the tongue on the short end touches the adjacent wall. Measure overlap between the installed plank and the last plank (Figure D1 & D2).

Using a sharp utility knife and a straight edge, score a line on the top surface of the plank. The plank should split on the score line with little effort. Use saw to cut plank to size. The plank should split on the score line with little effort. Use saw to cut plank to size.

Note: the end pieces must be longer than 8". This may require cutting a plank to start a row depending on the size of the room.

- Begin the next row with the cut piece from the previous row, creating the necessary stagger. This piece should be a minimum of 8" (20cm) long and the joint offset from the previous row should be at least 10" (26cm) apart. To attach, tilt the plank you are installing slightly upwards (about 15-25°), insert its tongue into the previous row's groove, and lower it into place. The plank will click into place with light pressure (Figure E).
- Install the second plank in the second row by inserting the short end tongue into the previously installed plank's groove. Align the plank so that the long side tongue tip is positioned just over the groove lip of the plank in the first row (Figure F). Working from the end seam, at a low angle, insert the long tongue into the groove of the adjoining plank. **Very little force** is required to fit the tongue into the groove. You should be able to feel the tongue lock into the groove (Figure G). Continue locking each piece into place, short side first and then long side.
- To fit the last row, lay a plank on top of the previous row. With the plank against the wall, mark a line down the length of the plank and cut the planks accordingly (Figure H).
- Door Frames and heating vents also require expansion room. Cut the planks to the correct length. Place the cut plank next to its actual position, use a ruler to measure the areas to be cut out and mark them. Cut out the marked points allowing the correct expansion distance on each side. T-molding is suggested in all doorways.





- You can trim doorframes by turning a panel upside down to use as a height guide. Using a handsaw, cut door frames to the necessary height so that planks slide easily under them.
- To finish the perimeter of the room, install quarter round molding using finishing nails. Nail quarter round directly into the baseboard not the flooring.

Maintenance, Tips, and Warnings

MAINTENANCE:

Dust-mop or broom can be used for daily maintenance. When necessary, clean with a MOIST cloth or mop and a neutral PH cleaner – heavy use of detergent cleaners will leave a residue and, over time, lead to a cloudy film.

NEVER USE floor polish or floor cleaning wax, oil soaps, etc. These products can damage and/or leave a film on the flooring. This is not a flooring defect.

TIPS:

- Always use felt tip protectors on all furniture legs/feet, and regularly clean any gathered dirt/grit from the pads - Entryway/walk off mats are recommended. **Warning:** Never use vinyl/latex/rubber backed protective mats.
- Area rugs are recommended
- Keep pet nails trimmed
- Sharp shoe-heels (e.g. high-heels) may dent the floors
- Never slide furniture across a floor without pads
- Keep floors clean
- For wet areas such as bathrooms, caulk/completely seal the perimeter of the floor with a flexible silicone caulk





WARRANTIES:

Joint Integrity: During the period of the warranty the Unilin locking system will not fail when properly installed and maintained according to manufacturer's instructions. Installed flooring must remain climate controlled with the temperature of 55-95°F (13-35°C) for the life of the product, with the herein listed exceptions.

Manufacturing Defect: During the period of the warranty, this product will be free from manufacturing defects.

Water Proof: During the period of the warranty, this product is 100% waterproof and the structural integrity of the floor will not be diminished by exposure to water as herein described.

Wear Resistance: During the period of the warranty, this product's wear layer will not wear through to the decorative layer under normal use. Excessive wear due to improper maintenance or care is not a wear layer or product defect.

What is NOT Covered by this Warranty (item list is not exhaustive)

- Improper Installation: Material that is not installed in accordance with the Installation Instructions is not a manufacturing related defect. Installer workmanship is not warranted.
- Labor cost to repair or replace material installed with visible defects/imperfections.
- Improper maintenance, resulting in gloss level loss.
- Damage resulting from use of strong detergents, chemicals, paints, dyes, improper mats, fertilizers, or other similar materials.
- Damage caused by moving appliances or heavy furniture without protecting the floor. (Always protect flooring by using protective covering when moving heavy objects.)
- Damage or scratches resulting from accidents, casualty events, abuse or improper usage (including damage from pet claws or teeth, urine etc.). Accidents, abuse, and improper usage are defined as, but are not limited to damage caused by: casters on furniture, rotating beater bars on vacuum cleaners, burns, cuts, impact from heavy and sharp objects ± narrow or spike heels, cleats, etc., as well as, damage resulting from unprotected furniture legs.
- Damage caused by leaks from appliances or plumbing.
- Construction damage after installation.
- Installation-related errors or damage including improper conditioning of jobsite and flooring materials, when necessary, and/or poor subfloor performance or failure.





- Fading, discoloration, or other damage due to excessive temperatures or sunlight. Radiant heat must not exceed 85°F (29°C) and be approved by the manufacturer for the use of their product with resilient vinyl flooring applications.
- Problems or damage due to excessive moisture or hydrostatic pressure from the sub-floor.
- Discoloration caused by use of vinyl, latex, or rubber-backed floor mats. Note: some synthetic backed carpets contain latex in the manufacturing process that may discolor vinyl. Always use mats marked as “non-staining”.
- Discoloration caused by rubber pads, rubber wheels, rubber tires, rubber rollers, automotive tires, etc.
- Flooring installed on stairs is excluded from warranty coverage.
- Installation of residential product in a commercial environment.

If the product fails to perform as stated in the warranty, We reserves the right to have the product inspected by a certified inspector. Should product be determined to be defective, We reserves the right to either repair or replace the defective area with the same color, design and grade product, if available. If product is unavailable or discontinued, We reserves the right to select and supply similar material.

- If repairs or replacement of a section is deemed necessary, all items must be cleared from the affected area subsequent to the original installation. The cost associated with the removal of those items will not be credited or reimbursed.
- Product costs will be covered for the length of warranty.
- Labor cost will not be covered.
- Warranty coverage for the replacement floor is limited to the remaining portion of the original warranty. Any additional claims for loss of profit or incidental losses due to defective product will not be considered. Some examples of incidental damages are: replacement of subfloors or underlayment, trim moldings, disconnecting / reconnecting appliances, moving of furniture or any other losses deemed incidental by us.

Failure to follow these procedures may result in voiding some or all of the warranty. This limited warranty is non-transferable and extends only to the original end user. Please note: *Some jurisdictions do not allow exclusion or limitation of incidental or consequential damages or limitations on how long an implied warranty lasts, so the above limitation and exclusion may not apply to you .*

This warranty gives you specific rights and you may also have other rights, which vary from state to state.

